



TH80

MAKING BALUSTRADING BETTER

The TH80 allows you to have the concrete balcony look with the peace of mind, knowing there will be no water leaks.



# The Benefits

- Australian Made & Owned.
- In today's building design light weight construction is becoming the desired system.
- Concrete balconies are not a requirement for waterproofing using TH80.
- No penetrations in waterproofing membranes.
- TH80's durable material properties will not fail due to moisture and structural movement.

# More Benefits

- Light weight construction compatible which is cheaper than concrete.
- The TH80 has a greater mounting area when compared to the old and outdated systems that are currently used. This allows for a more stable post mount.
- The TH80 can be used as a mounting platform for temporary hand railings.

# Painful & Costly Old System

Why Change? Here are a few reasons.

- No more drilling through tiles and membranes to install balustrading, causing waterproofing failure. No more water entering the structure to cause rot and water damage.
- No more insurance claims.
- No home warranty and insurance issues.
- No more damaged soffits or paint damage.

# Easy Install

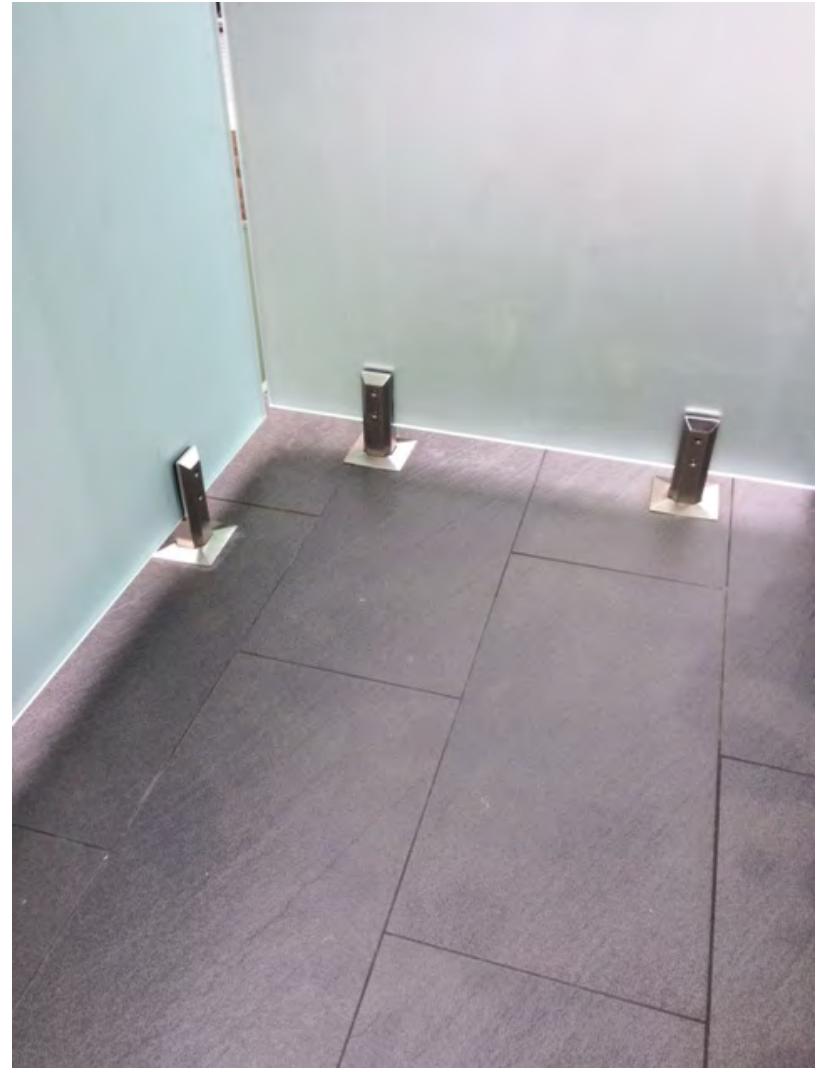
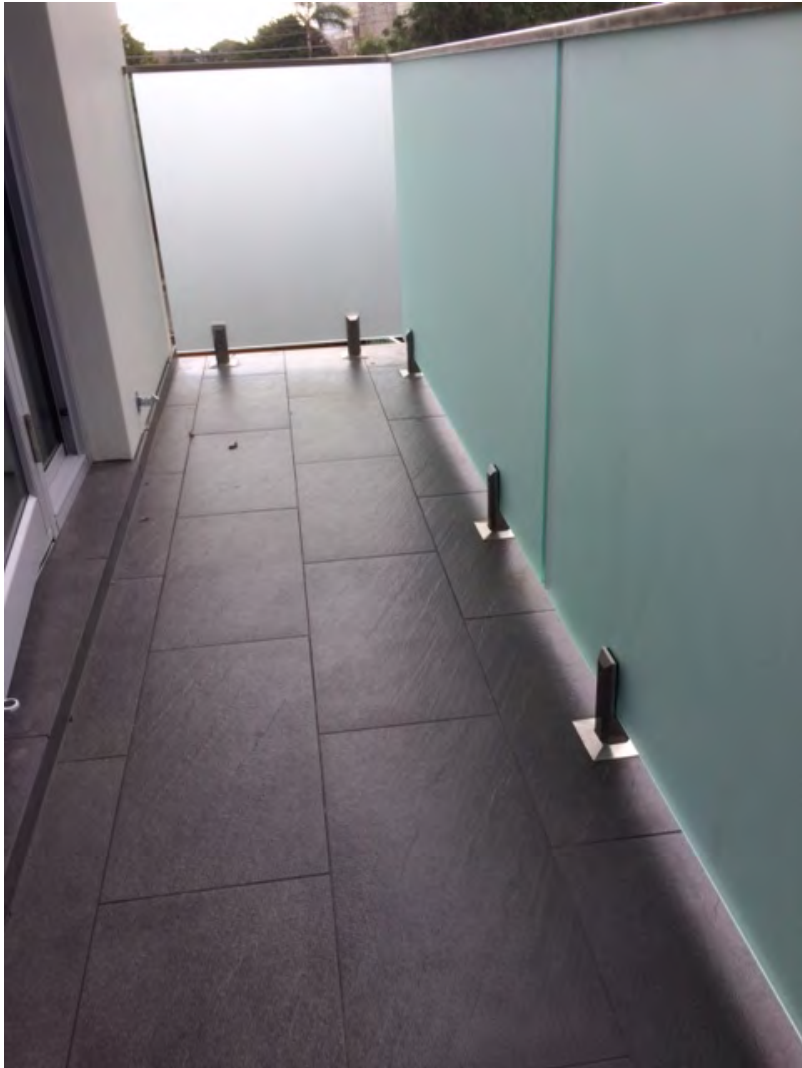


# TH80 Easy Installation

1. ONCE CONSTRUCTION OF BALCONY / DECK IS COMPLETE SET OUT SPIGGOT POSTIONS AS REQUIRED BY DESIGN.
2. MARK OUT CENTRES OF SPIGOTS AND CHECK MEASURE.
3. USING A 89mm HOLE SAW SUITED TO MATERIAL TO BE PENETRATED DRILL HOLES.
4. PLACE TH80 INTO HOLE AND PRE DRILL MOUNTING SCREWS. TO SUITE SCREW OF CHOICE (RECOMMENDED IS A 10 GAUGE BUEGLE)
5. CLEAR ALL LOOSE DEBRIS AND WIPE ALL CONTACT POINTS DOWN WITH CLEANING AGENT.



# Beautiful Finish





6. USING A COMPATIBLE ADHESIVE EG .SIKA 11 FC RUN A BEAD AROUND THE PERIMETERS OF CONTACT POINTS.
7. PLACE TH80 INTO POSITION AND SCREW DOWN MAKING SURE NOT TO STRIP THREADS , THIS MAY CAUSE SYSYEM FAILURE.
8. CLEAN UP EXCESS ADHESIVE AND SMOOTH OVER.
9. RECOMENDED TO COVER SCREW HEADS WITH ADHESIVE TO PREVENT MEMBRANE SINKAGE.
10. ONCE ADHESIVE HAS CURED WATER PROOFING MEMBRANE CAN BE APPLIED AS PER USUAL PRACTICES BEING SURE TO RUN THE MEMBRANE INTO THE TH80.
11. ONCE THE DESIRED WATER PROOFING SYSTEM IS COMPLETE THE SPIGGOTS OR POSTS CAN BE INSTALLED USING NON SHRINK GROUT.
12. IT IS RECOMMENDED BUT NOT NECESARY TO PAINT THE MEMBRANE OVER THE GROUT WHEN POSSIBLE.

# Why The TH80

Benefits to big suppliers: Hardies & CSR

This product will make the use of fibre cement floor sheets more appealing to installers due to the fail proof system.

The problem with light weight balconies has always been penetration through the deck/membrane. TH80 implant eliminates this.

This has steered builders, designers and architects to specify concrete slabs externally to avoid waterproofing issues.

This product can also allow different design options to balconies now we are not limited to face fixing which is daring in its design.

The TH80 implant will suit many home designs and project builders that don't normally use concrete slabs for balconies.

Manufacturers installation technique is included on our website.

Short film about install and finish.

Short Film of ours V's theirs.

Proof of strength of ours.

Stainless steel version available on order.